

KRISHNA CHANDRA COLLEGE



Estd. 1897
(Govt. Sponsored)

ACCREDITED BY NAAC WITH 'GRADE B'
HETAMPUR, BIRBHUM.
PIN-731124

Mobile : 9434015200 / 6294670390
Email : principalkccollege@yahoo.com
Website : www.kccollege.ac.in

Ref. No.....

Date..... 04.04.2023

2.3.1 - Student centric methods, such as experiential learning, participative learning and problem-solving methodologies are used for enhancing learning experiences during the year 2021-22

Department of Geography			
Number of students undertaking project work/ field work / internships			
Programme name	Program Code	List of students undertaking project work/field work/internship	Link to the relevant document
B.A HONS GEOGRAPHY[4 th SEM] Course code : sec- 2	1.	AFTAB KHAN	https://drive.google.com/file/d/12keyP8P6ceoD68skV/L72feKiI8NsOj2/view?usp=drivesdk
	2.	ANIMESH ORANG	
	3.	BARNALI BAGDI	
	4.	BISWAJIT MONDAL	
	5.	CHAND HEMBRAM	
	6.	DHIRAJ DAS	
	7.	FALGUNI ZAMADAR	
	8.	MOHIT KARMAKAR	
	9.	PUJA CHAKRABORTY	
	10.	SABANA YEASMIN	
	11.	SHARMISTHA DAS	
	12.	SHRABANI DAS	
	13.	SUBHA SUTRADHAR	
	14.	SUJOY CHANDRA	
	15.	SUTAPA PAL	
	16.	URMILA DAS	

Quasiquicentennial College (125+)

KRISHNA CHANDRA COLLEGE



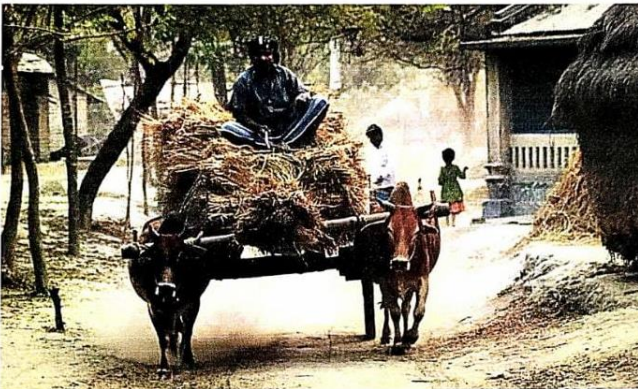
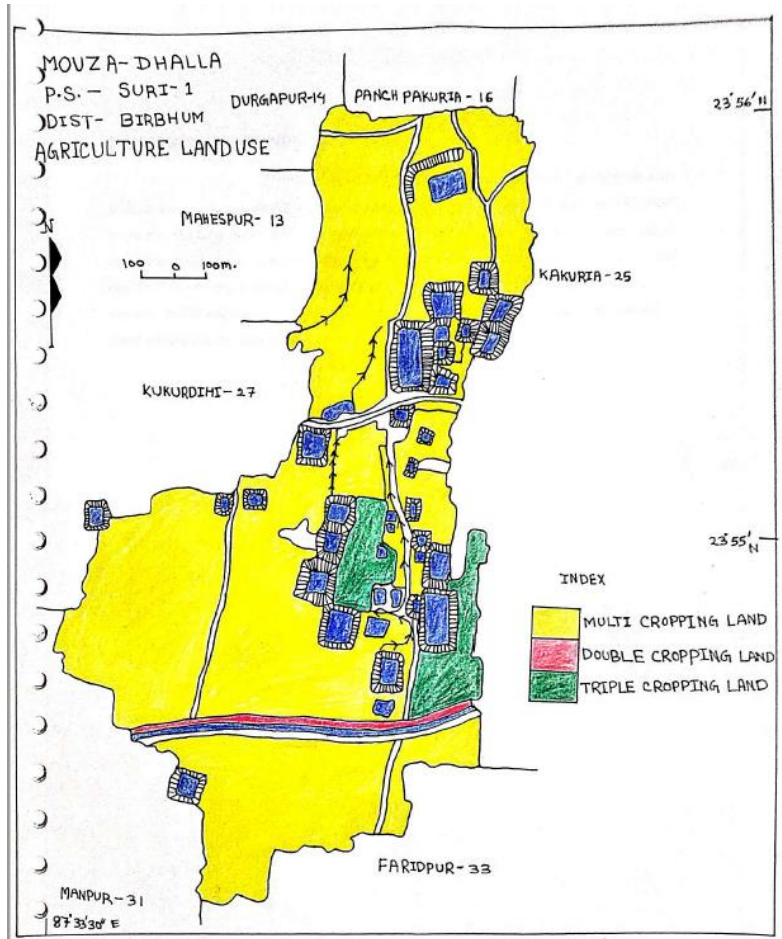
Estd. 1897
(Govt. Sponsored)

ACCREDITED BY NAAC WITH 'GRADE B'
HETAMPUR, BIRBHUM.
PIN-731124

Mobile : 9434015200 / 6294670390
Email : principalkccollege@yahoo.com
Website : www.kccollege.ac.in

Ref. No.....

Date.....



Bullock cart – still the major mode of transportation even in this space age



Quasiquicentennial College (125+)

KRISHNA CHANDRA COLLEGE



Estd. 1897
(Govt. Sponsored)

ACCREDITED BY NAAC WITH 'GRADE B'
HETAMPUR, BIRBHUM.
PIN-731124

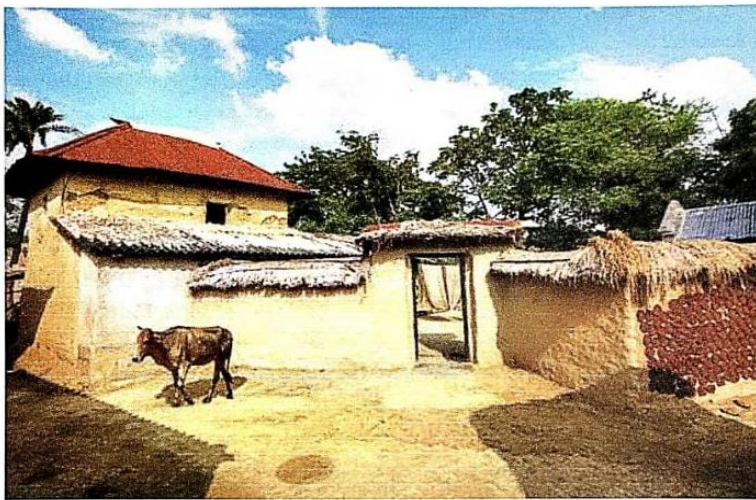
Mobile : 9434015200 / 6294670390
Email : principalkccollege@yahoo.com
Website : www.kccollege.ac.in

Ref. No.....

Date.....



REDMI NOTE 9
SHOT BY SUTAPA PAL



Thatched huts housing poor middle class families



Quasiquicentennial College (125+)

KRISHNA CHANDRA COLLEGE



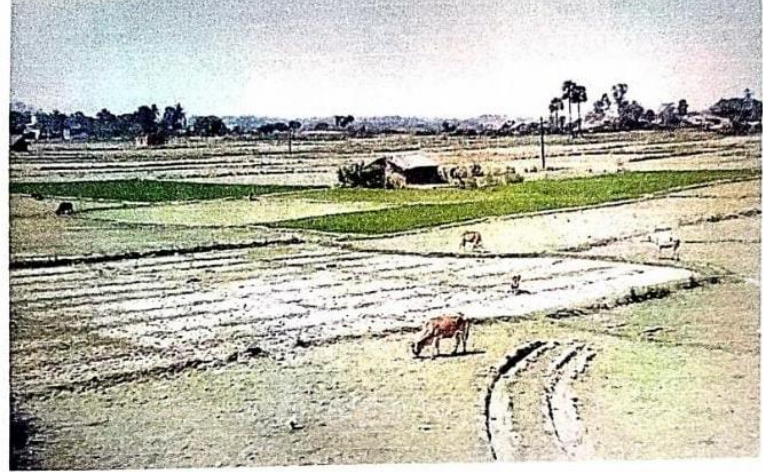
Estd. 1897
(Govt. Sponsored)

ACCREDITED BY NAAC WITH 'GRADE B'
HETAMPUR, BIRBHUM.
PIN-731124

Mobile : 9434015200 / 6294670390
Email : principalkccollege@yahoo.com
Website : www.kccollege.ac.in

Ref. No.....

Date.....



Cultivation area in Dhalla



Quasiquicentennial College (125+)

KRISHNA CHANDRA COLLEGE



Estd. 1897
(Govt. Sponsored)

ACCREDITED BY NAAC WITH 'GRADE B'
HETAMPUR, BIRBHUM.
PIN-731124

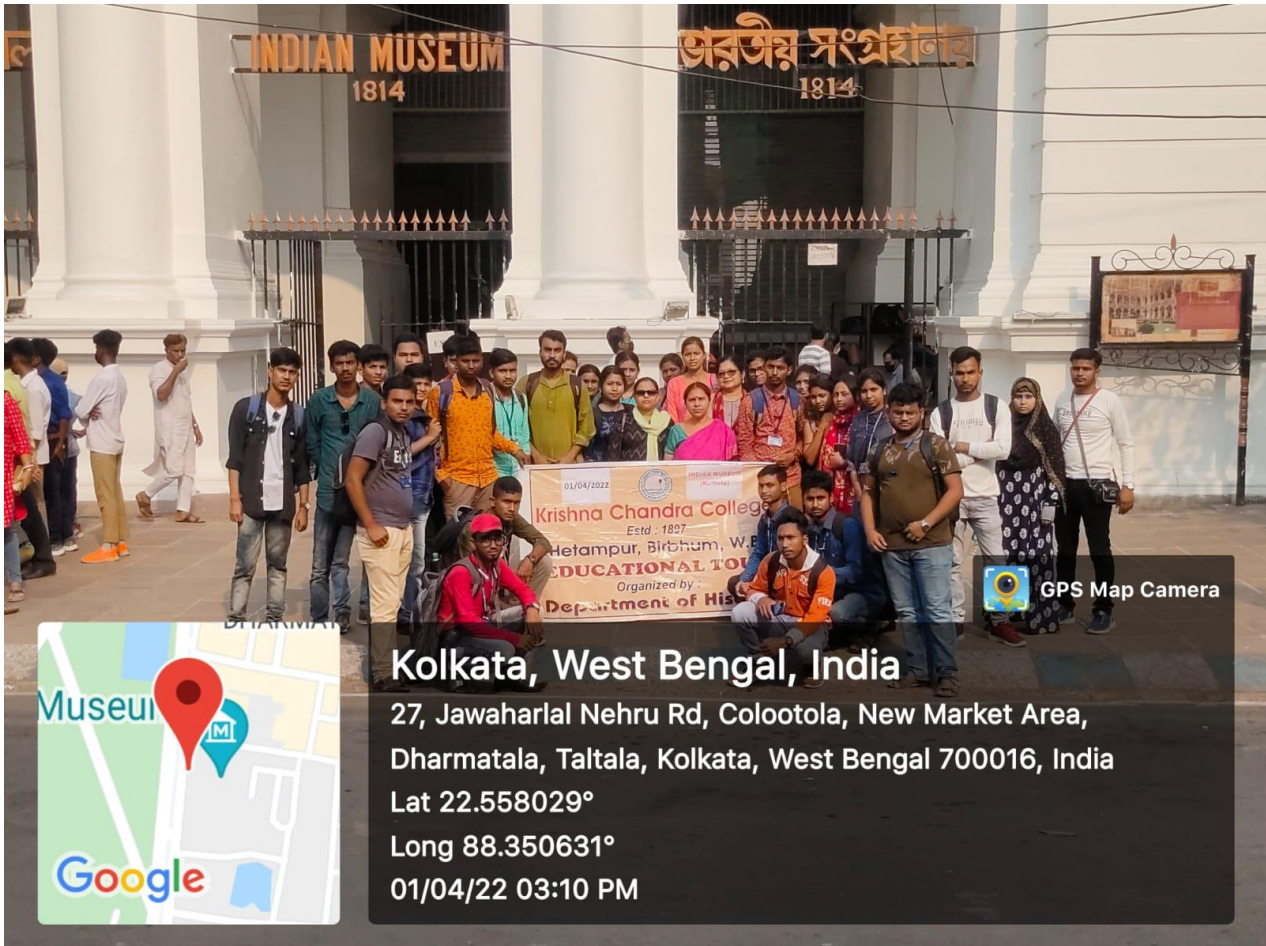
Mobile : 9434015200 / 6294670390
Email :
principalkccollege@yahoo.com
Website :
www.kccollege.ac.in

Ref. No.....

Date.....

DEPARTMENT OF HISTORY

Date of Educational Tour : 01.04.2022
Place of visit : The Indian Museum, Kolkata, West Bengal, India
Number of Beneficiary : 31 students and 4 faculty members



Quasquicentennial College (125+)

KRISHNA CHANDRA COLLEGE



Estd. 1897
(Govt. Sponsored)

ACCREDITED BY NAAC WITH 'GRADE B'
HETAMPUR, BIRBHUM.
PIN-731124

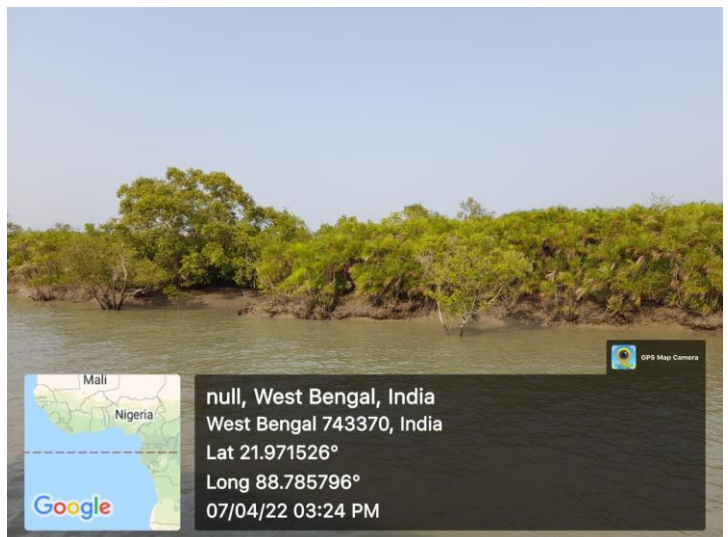
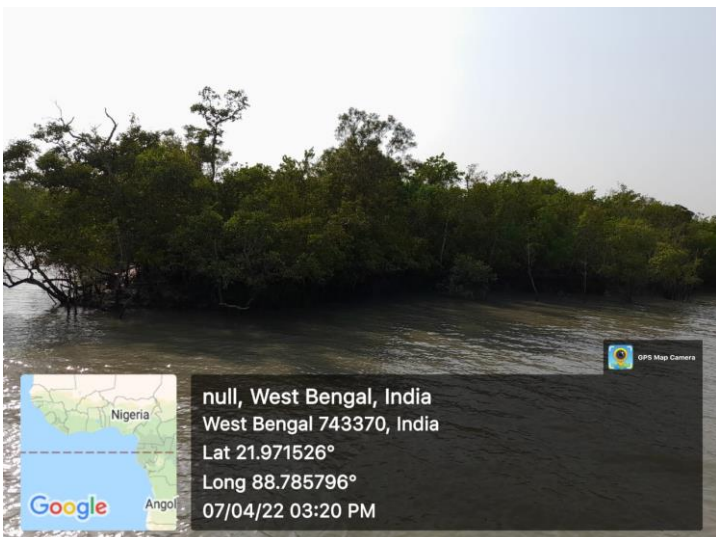
Mobile : 9434015200 / 6294670390
Email : principalkccollege@yahoo.com
Website : www.kccollege.ac.in

Ref. No.....

Date.....

DEPARTMENT OF ZOOLOGY

Date of Educational Tour/ Excursion: **09.04.2022**
Place of visit : **Sundarbans, West Bengal, India**
Number of Beneficiary : **25 students and 2 faculty members**



Quasiquicentennial College (125+)

KRISHNA CHANDRA COLLEGE



Estd. 1897
(Govt. Sponsored)

ACCREDITED BY NAAC WITH 'GRADE B'
HETAMPUR, BIRBHUM.
PIN-731124

Mobile : 9434015200 / 6294670390
Email : principalkccollege@yahoo.com
Website : www.kccollege.ac.in

Ref. No.....

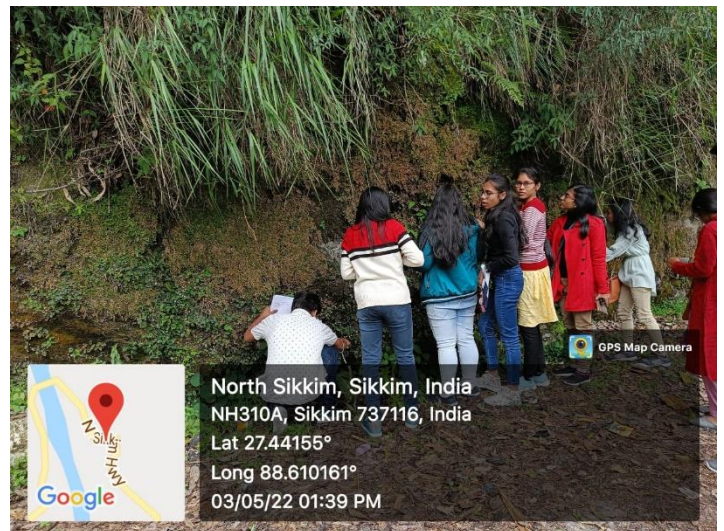
Date.....

DEPARTMENT OF BOTANY

Date of Educational Tour/ Excursion : 02.05.2022

Place of visit : Sikkim, India

Number of Beneficiary : 16 students, 2 faculty members & 1 Support staff



Goutam

Principal
Krishna Chandra College
Hetampur, Birbhum