



BEST PRACTICES IN OUR INSTITUTION

Best Practice I

- **Title of the practice:** *Beyond the Classroom: Bridging Education and Social Services.*
- **The context that required the initiation of the practice:** *The COVID-19 pandemic, which began in late 2019, has had a severe global impact. Our country has not been immune to its effects, experiencing an extended period of lockdown. People from economically disadvantaged backgrounds have been the hardest hit. Therefore, teaching is not the institution's sole duty; it is our responsibility to assist the less fortunate members of society.*
- **Objectives of the practice:** *The main objective of the practice is to foster social responsibility among the stakeholders of the institution and promote inclusivity for those who are economically disadvantaged or facing societal challenges. Additionally, it aims to bridge the gap between educational institutions and the broader community.*
- **The Practice:** *The main practice is to assist local people whenever they face difficulties related to education, health, or any other kind. To achieve this, the NCC and NSS teams of the institute play a very active role in raising awareness among the villages on various issues and societal aspects. Additionally, the institute organizes gift distribution before Durga Puja to provide local people with clothing and food. Moreover, the institute has organized "Wall of Kindness" camps in nearby Srichandrapur village for clothing donations.*
- **Obstacles faced if any and strategies adopted to overcome them:** *The initial challenge was securing the necessary funding for these programs, followed by the need to assemble a substantial workforce for their organization. Fortunately, thanks to the spontaneous and overwhelming support from our teachers, non-teaching staff, and students, we were able to successfully overcome all these obstacles.*

- **Impact of the practice:** *With this practice, we have been able to assist a significant number of local residents. The gift distribution ceremony alone allowed us to provide clothing and food to over 300 individuals. Additionally, our "Wall of Kindness" initiative has brought benefits to approximately 115 people in Srichandrapur village by providing them with much-needed clothing. We are proud of the positive impact we have made through these initiatives, enhancing the well-being of many individuals in the local villages.*
- **Resources required:** *Following such practice requires a large amount of manpower and time. The availability of a large number of dedicated teachers, non-teaching staff, and students makes it possible to continue such practice. Also organizing programs under this practice requires financial assistance.*

Best Practice II

- **Title of the practice:** *Green Initiative for Sustainable Future.*
- **The context that required the initiation of the practice:** *In the last century, the pace of industrialization resulted in many developments in the world. However, most industrialization caused severe damage to our environment by increasing pollution in the environment, reducing water resources. The pollution of the environment resulted in climate change, adverse effects on health. But stopping the whole process of industrialization is not a solution to the above problems. Instead, if we incorporate environmentally friendly resources into industries as well as in our everyday use, this practice may help stop the gradual deterioration of the health of our environment. Implementation of such a practice require proper awareness about various environmental issues.*
- **Objectives of the practice:** *The main objective of the issue is to aware the local population, students about the various environmental issue. Also, we want to convey the message that how we can prevent damage to our environment by properly following environment-friendly procedures.*
- **The Practice:** *To follow such practice, we first aware newly admitted students to our institute how global warming is leading towards ice melt in polar caps, in the Himalayas, and resulting in unusual floods and droughts in various regions of the world. We also made them aware of how the increase in carbon and other harmful particles in the breathable air causes various lung diseases. Also, as we are an agriculture-friendly country, our agricultural process requires a large amount of water, leading to some wastage of water. So, we make them aware of how we can reduce carbon footprint by using alternative energy like using solar energy, using LED lights, and BEE star-rated appliances to reduce the usage of formal source sources of energy. In our institute, we have fitted LED lights and BEE star-rated*

appliances to reduce carbon footprint. We also have a solar panel in our institute to meet a small portion of our energy requirement. We train our students to switch off electronic appliances like lights, fans, desktops when not in use. We also monitor how they are applying the aforementioned practice. We also make them aware of how afforestation can be helpful for the restoration of health in our nature. We encourage them to actively participate in various activities that aim to increase vegetation. Also, encourage students to convey the message to villagers that how we can stop energy wastage, use green energy, etc. In our institute, we also organize a tree plantation program to increase vegetation in our institute. In our institute, we have a medicinal garden which contains a vast variety of rare and valuable medicinal plants. We have also installed a rainwater harvesting system in our institute to conserve water.

- **Obstacles faced if any and strategies adopted to overcome them:** *Implementation of this practice requires large manpower, a great amount of time as well as patience. Due to the academic load the students, faculty members, non-teaching staff have little time to contribute to this practice. However, working in some extra time all the stakeholders have contributed to this mission.*
- **Impact of the practice:** *It is prudent to note that the outcome of such a practice cannot be seen in a small amount of time. The outcome of such practice can only be seen globally after a large amount of time if a large section of the population contributes globally. However, some benefits of this practice may be seen locally such increase in the number of plants on the campus, storage of water, etc. Due to this practice, environmental awareness among the local people is gradually increasing.*
- **Resources required:** *Following such practice requires a large no of participation. The involvement of a large no of dedicated teachers, non-teaching staff, and students make it possible to pursue such practice. Also organizing programs under this practice requires financial assistance from various sources.*




Principal
Krishna Chandra College
Hetampur, Birbhum

Photographs

Best Practice I: Beyond the Classroom: Bridging Education and Social Services.

Gift distribution before Durga Puja



"Wall of Kindness" camp in nearby Srichandrapur village



Best Practice II: Green Initiative for Sustainable Future.

Rainwater Harvesting



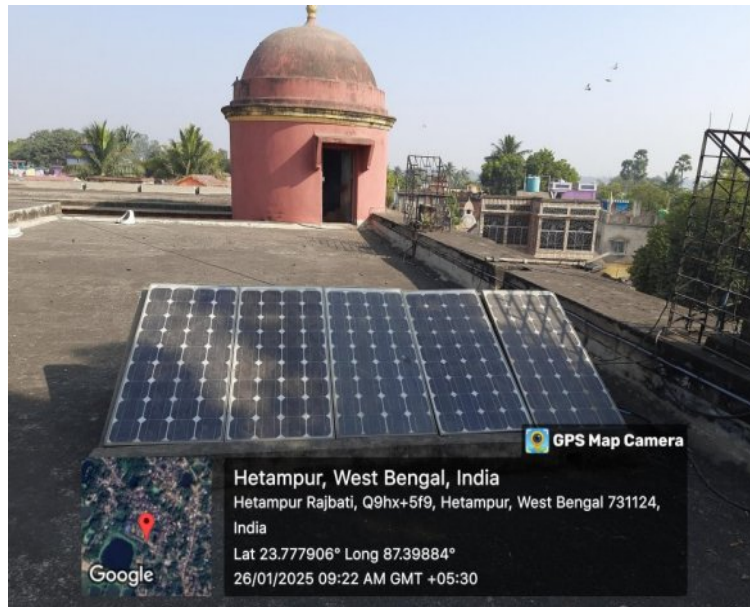
Bore Well/Open Well Recharge



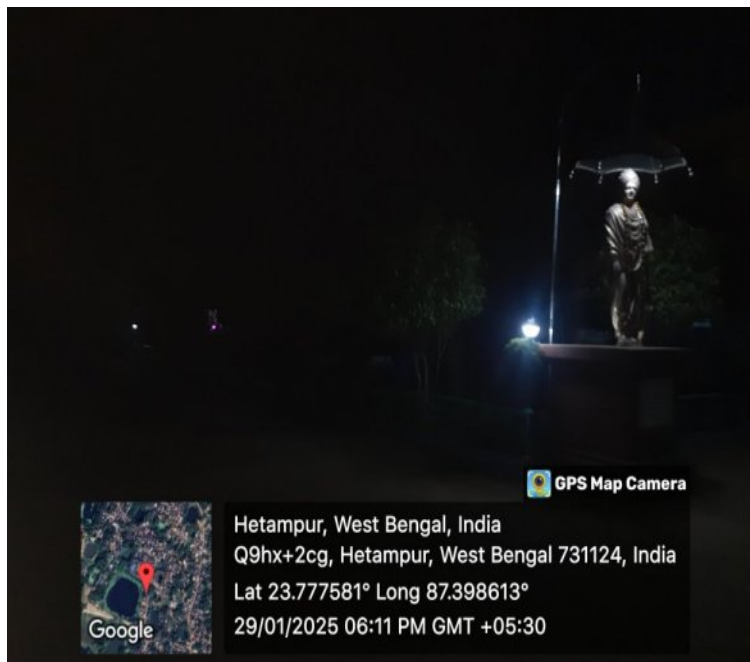
Construction of Tanks and Bunds



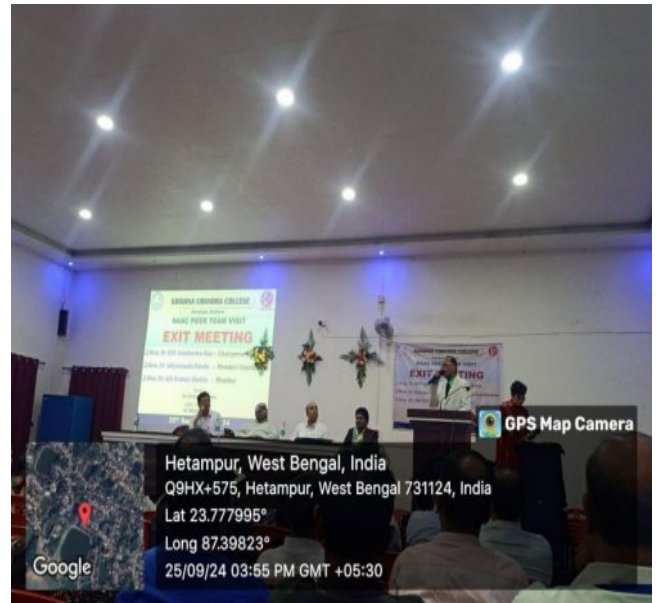
Our Rooftop Solar Panels



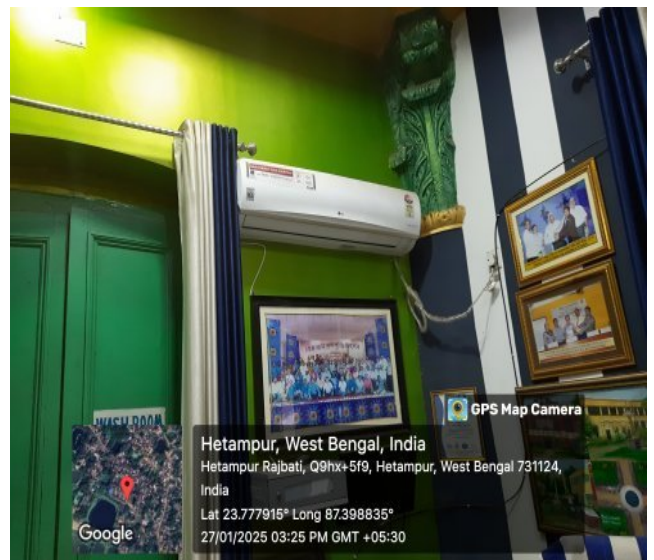
Use of Energy Generated by Solar Panels



Use of LED Bulbs



Power-Efficient Equipments



Use of Bicycles/ Battery powered vehicles



Pedestrian Friendly pathways



Ban on use of Plastic



Landscaping with trees and plants




Principal
Krishna Chandra College
Hetampur, Birbhum